

Steel Shot & Grit



**ENVIRO
ABRASIVES**

ENVIRONMENTAL ABRASIVES WAREHOUSE

4301 Federal Way
Boise, ID 83716
(208) 947-1351

sales@enviroabrasives.com
www.enviroabrasives.com

**Longer Life
Greater Durability
NO Microcracks
Superior Microstructure
Best Value**



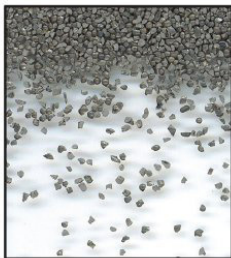
G-16



G-18



G-25



G-40



G-50



G-80

Cast Steel Grit

- Manufactured to SAE J444, J1993 Specification
- Sizes from G14 (Coarse) to G120 (Fine)



- Bridge Blasting
- Pipe Coating
- Epoxy Coating Preparation
- Flashing Removal
- Structural Steel
- Iron and Steel Foundries
- Forging Industry
- High Detail Parts
- Rail Car Reconditioning
- Ship Building

S-780

S-660

S-550

S-460

S-390

S-330

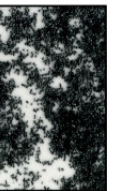
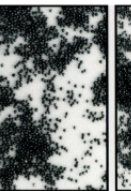
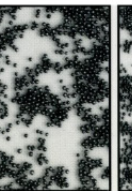
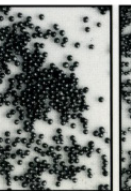
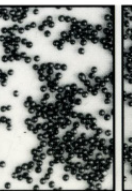
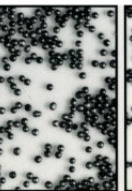
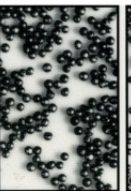
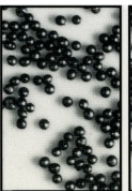
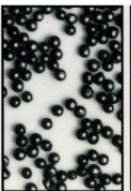
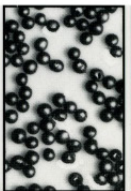
S-280

S-230

S-170

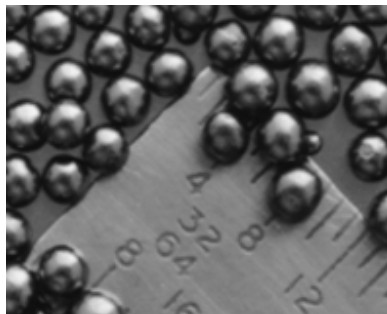
S-110

S-70



Cast Steel Shot

- Manufactured to SAE J2175 Specification
- Sizes from S-780 (Coarse) to S-70 (Fine)



- Steel Bar Drawers
- Heat Treaters
- Pipe Manufacturers
- Drum Re-conditioners
- Iron and Steel foundries
- Farm implement manufacturer
- Forging Industry
- Aluminum Die Casters
- Aluminum Sand Foundries

**Premium
BAINITE
Steel Shot**



**Metaltec
Steel
Abrasive Co.®**



Bainite steel microstructure wears better and last longer than typical martensitic steel shot